

Ball Transfer Unit A7151-16

Ball Units Series A7 - Wheel S/3

-30 °C - +100 °C

- swivels easily
- wear resistant
- shock proof
- floor protective
- weather proof

Wheel

Ball: carbon steel or stainless steel

Units are machined using CNC machines
from one piece of steel

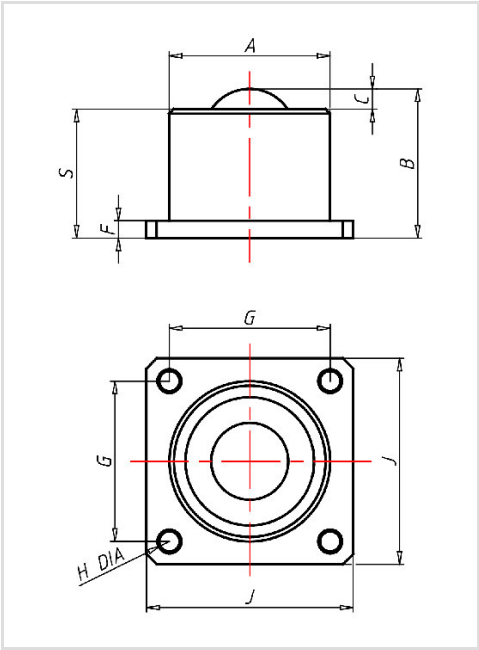
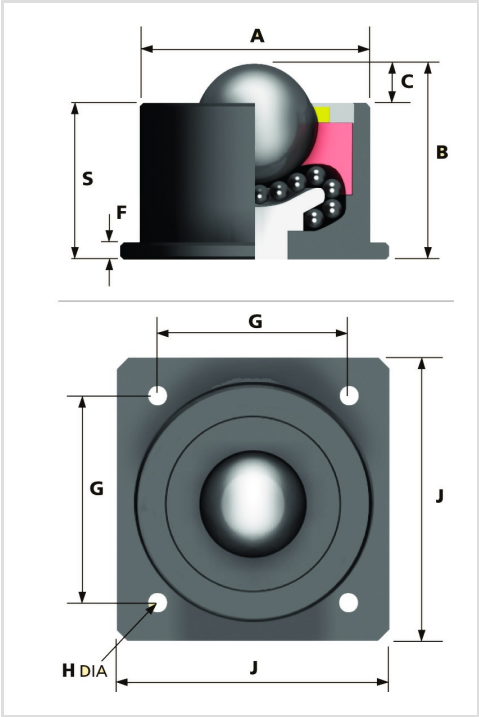
Hevi-Load units run on the re-circulating ball principle
The load ball rotates on a hardened bed of small balls

Ball Transfer Unit	
Series:	3
Ball-Ø mm:	38,1
Finish housing:	steel
Finish Balls:	stainless steel
Load Capacity kg:	670
Load capacity tested according to EN 12530 and EN 12527	
A mm:	60
B mm:	62,2
C mm:	13
F mm:	12,4
G mm:	57,9
H mm:	7,1
J mm:	76,2
S mm:	49,2

Advantages

- ✓ Casing made of solid steel on the lathe
- ✓ units run on the re-circulating ball principle
- ✓ The load ball rotates on a hardened bed of small balls
- ✓ plate with four fixing holes

©Copyright 2024 Rollenbau GmbH, www.rollenbau.at 09.05.2024



Applications

- Haulage way
- Assembly lines